



ISO 9001 인증
ISO 14001 인증
ISO 18001 인증

Samsco
www.samsteel.co.kr

SAMHYUN
Steel Manufacture Solution Partner



SAMHYUN

하늘 높은 곳에 푸른 꿈,
삼현철강이 이루어 드립니다.

삼현철강주식회사
SAMHYUN STEEL CO., LTD.



미래를 향한 꿈을 실천하는 기업—
The dream to the future, We make it comes true

함안공장
(원자재센터)

광양1공장
(코일센터)

SYNERGY
MAXIMIZING

광양2공장
(절단,가공,제작)

서울
사무소

VISION

'삼현철강'은 보이지 않는 무한한 가능성을 지니고 있습니다.

There are invisible unlimited possibilities on "The SAMHYUN Steel".



Contents

- 03 | 인사말 / CEO Message
조직도 / Organization
- 04 | 회사연혁 / Company History
- 06 | 입지조건 / Location Condition
- 07 | Products
- 08 | 광양2공장 / Gwangyang No. 2 Factory
- 12 | 광양1공장(코일가공센터) / Gwangyang No. 1 Factory (Coil Center)
- 14 | 주요 생산품 / Main Products
- 15 | 인증서 / The Status of Certificates



인사말씀/CEO Message

저희 삼현철강은 세계곳지의 철강제조사인 POSCO 열연판매점으로 1978년 창립 이래 오늘날까지 고객 여러분의 성원과 격려 속에서 성장하여 동업계의 선두주자로 우뚝서게 되었습니다.

광양 1공장(코일센터) 및 광양 2공장을 신축하여 창립초기의 단순유통에서 벗어나 철강재를 종합가공하여 제품을 판매하는 제조회사로서의 경쟁력을 갖추고 또한 TOTAL STEEL SERVICE 체제를 구축하여 고객이 원하는 제품을 한곳에서 공급 받을 수 있는 ONE-STOP SERVICE에 따른 시너지효과를 이용한 수익창출에 역점을 두고 있으며 고품질과 물류비절감으로 고객의 이익을 창출하는 기업으로 거듭 변모하고 있습니다.

또한 광양 2공장 준공으로 항만입지와 물류 원활조건을 갖추어 절단, 가공, 제작, 도장까지 고객입장에 서서 끝까지 책임을 지는 자세로 전 임직원이 노력하겠습니다.

“고객감동” “환경친화” 등 수요자와 사회에 대한 서비스 및 신뢰구축의 일환으로 ISO9001(품질경영시스템), ISO14001(환경경영시스템), OHSAS18001(안전보건경영시스템) 획득하였습니다.

앞으로도 삼현철강은 윤리경영으로 원칙을 중시하되 변화를 두려워하지 않는 신념으로 항상 밝은 미소로 고객에게 정성을 다하며 주주와 사회로부터 신뢰받는 기업으로 성장할 수 있도록 최선의 노력을 다하며 미래의 중심에서 영원한 버팀목이 되겠습니다. 감사합니다.

Amid our customers' support and encouragement, until today, since our establishment in 1978, we Samhyun Steel, as a hot rolled steel materials dealer of POSCO, which is a leading steelmaker in the world., have grown to be an outstanding front-runner in the field.

With the Gwangyang No.1 Factory (Coil Center) and the Gwangyang No.2 Factory newly built, we are now equipped with the competitiveness as a maker who manufacture and deal with steel comprehensively, and have established a total steel service system, so that we can focus on the profit creation, employing the synergy effect from the one-stop service where the customers can be supplied with the products they want at one place, and so that we may continually transform ourselves into a corporation which creates profit for our customers through high quality, as well as distribution cost saving.

Also, we, all Samhyun employees, are going to make efforts, with an attitude to take responsibilities to the end, putting ourselves in the customers' places, from cutting, to processing and manufacturing, to painting, while being equipped with the locational condition near a port, along with the smooth distribution condition, as the Gwangyang Second Factory has been built.

As part of our efforts for providing good services, for the prospective customers and the society, represented by “customer impression” and “eco-friendliness”, and for the buildup of trust with them, we have acquired ISO9001 (Quality Management System), ISO14001 (Environment Management System) and OHSAS18001 (Safety And Health Management System) certificates.

Down the road, too, we Samhyun Steel will exert ourselves to the utmost for our customers with bright smiles, and with our conviction not to fear a change, while putting emphasis on the principles, through the ethical management, doing our best, so that we may grow up into a corporation trusted by the stockholders and the society, and being a prop of the society forever in the center of the future. Thank you.

조직도/Organization





미래를 향한 꿈을 실천하는 기업—
The dream to the future, We make it comes true



광양1공장(코일가공센터)/Gwangyang No.1 Factory (Coil Center)



함안공장(원자재 판매공장)/Haman Factory

Steel Manufacture Solution Partner

입증된 기술력에 자만하지 않고 끊임 없는 연구개발을 통해
고객만족을 위한 최고의 품질과 솔루션을 제공하는 기업이 되겠습니다.



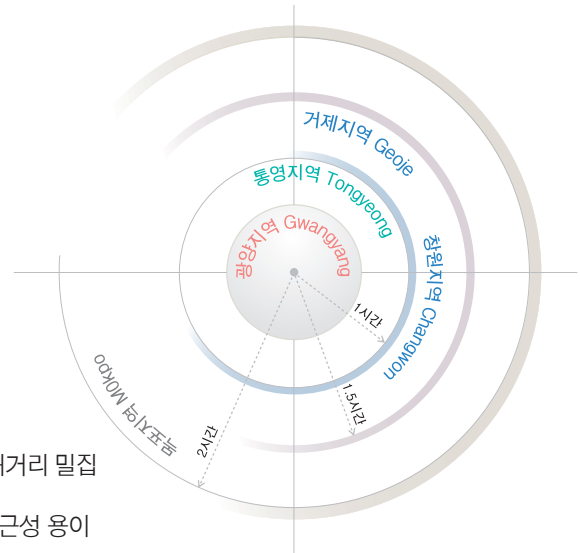
광양2공장/Gwangyang No.2 Factory



회사연혁 Company History

- 1978. 11. 삼현철강상사 창립
 - 1979. 01. POSCO 열연강판 대리점 지정
 - 1984. 01. 삼현철강주식회사 법인설립
 - 1988. 02. POSCO 절단 가공업체 선정
 - 1994. 10. 경남 함안 COIL CENTER 준공
 - 1995. 12. 창원 절단 및 용접공장 준공
 - 2001. 01. KOSDAQ 증권시장 상장
 - 2003. 11. 광양1공장(COIL CENTER) 준공
 - 2005. 03. POSCO HR-PLATE 지정 임가공 업체 선정
 - 2005. 07. 현대제철 형강 판매점 지정
 - 2010. 02. 광양절단 전처리공장(광양SPFC) 착공
 - 2011. 03. 광양 전처리 절단공장 (광양SPFC) 준공
 - 2011. 04. 산인 형강 하치장 매입 이전
 - 2011. 06. 볼보 B/Out 납품업체 선정
 - 2011. 10. 철강영업부문 창원시 상남동 이전
 - 2011. 11. 볼보 B/Out 양산납품시작
 - 2012. 02. 광양 2공장 건축착공
 - 2012. 12. 광양 2공장 완공
-
- 1978. 11. Samhyun Steel Company founded
 - 1979. 01. Designated as a hot rolled steel sheet dealer for POSCO
 - 1984. 01. Samhyun Steel Co., Ltd. established
 - 1988. 02. Designated as a cutting processor for POSCO
 - 1994. 10. The Coil Center was built in Haman, Gyeongnam Province
 - 1995. 12. The cutting and welding factory was built in Changwon
 - 2001. 01. Was listed on the KOSDAQ stock market
 - 2003. 11. The Gwangyang No.1 Factory (Coil Center) was built
 - 2005. 03. Selected as a designated POSCO HR-Plate toll processor
 - 2005. 07. Designated as a shape steel dealer for Hyundai Steel
 - 2010. 02. The building of the Gwangyang Steel Cutting Preprocessing Factory (Gwangyang SPFC) started
 - 2011. 03. The building of the Gwangyang Steel Cutting Preprocessing Factory (Gwangyang SPFC) completed
 - 2011. 04. Shape steel dumping site was moved to Sanin after a site is bought there
 - 2011. 06. Selected as a B/Out supplier for VOLVO
 - 2011. 10. The Steel Sales Division moved to Sangnam-dong, Changwon City
 - 2011. 11. B/Out mass production and supply began for VOLVO
 - 2012. 02. The building of the Gwangyang No. 2 Factory started
 - 2012. 12. The building of the Gwangyang No. 2 Factory completed





입지조건/Locational Condition

- 당사 신사업과 연관된 산업집중으로 거래선 확보용이
- POSCO 광양제철소에서 생산되는 후판 대량 수요처 2시간 이내거리 밀집
- POSCO 광양제철소와 인접하여 물류용이
- 광양지역의 발전된 산업인프라 및 도로연계망, 해상운송 등 접근성 용이
- Industrial corporations are concentrated related to our new projects, so the securement of the customers is easy
- Major customers for the thick plates produced at POSCO's Gwangyang Steel Mill are concentrated within two hours' distance from us
- Is near to POSCO Gwangyang Steel Mill, so the distribution is convenient
- Easy accessibility due to the developed industrial infrastructure, network of roads and marine transportation in the Gwangyang region



광양지역 : POSCO / POSTEEL / DSSW
통영지역 : SPP / SUNGDONG
거제지역 : 삼성중공업 / DSME / VOLVO / STX
목포지역 : 현대삼호중공업 / 대한조선주식회사

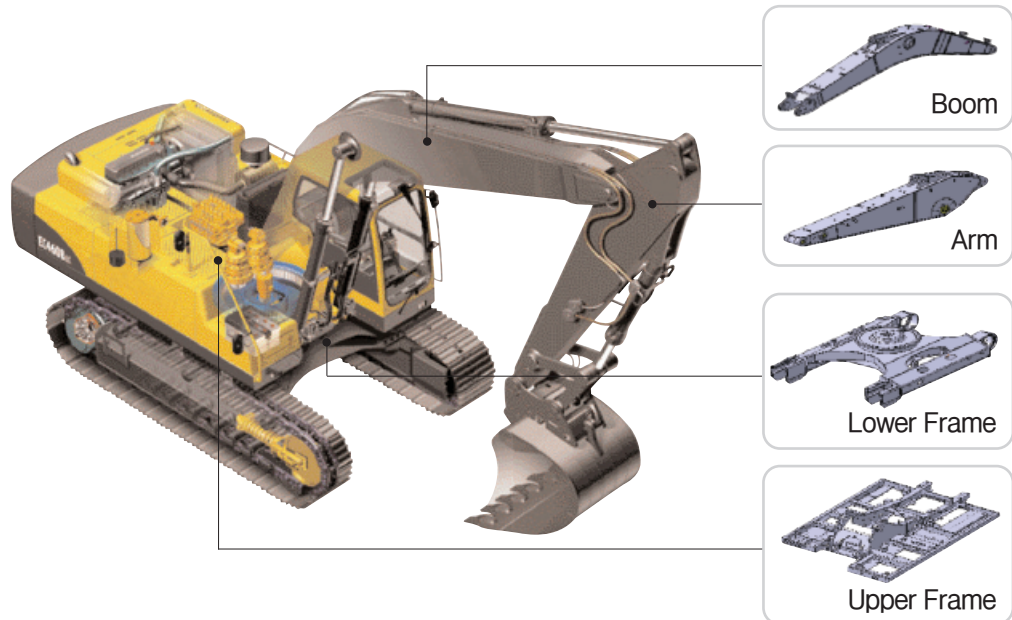


광양2공장 /Gwangyang NO.2 Factory

- 건설중장비, 제관 및 육해상 플랜트 제작
- 조선해양, POSCO외 절단, 가공, 제작 위주의 생산
- 절단설비 : PLASMA(9대), GAS(6대), LASER(1대)
- 제작능력 : 45,000ton/년(월 3,750ton) • 절단가공능력 : 96,000ton/년(월 8,000ton)
- Heavy equipment for construction, steel pipes and land or sea plants
- Production centered around cutting, processing and manufacturing for, shipbuilding and POSCO
- Cutting facilities : Plasma(9 units), Gas(6 units), Laser(1 units)
- Production capacity : 45,000 ton/year(3,750ton/month)
- Cutting process capacity : 96,000 ton/year(8,000ton/month)



Products



굴삭기 및 중장비

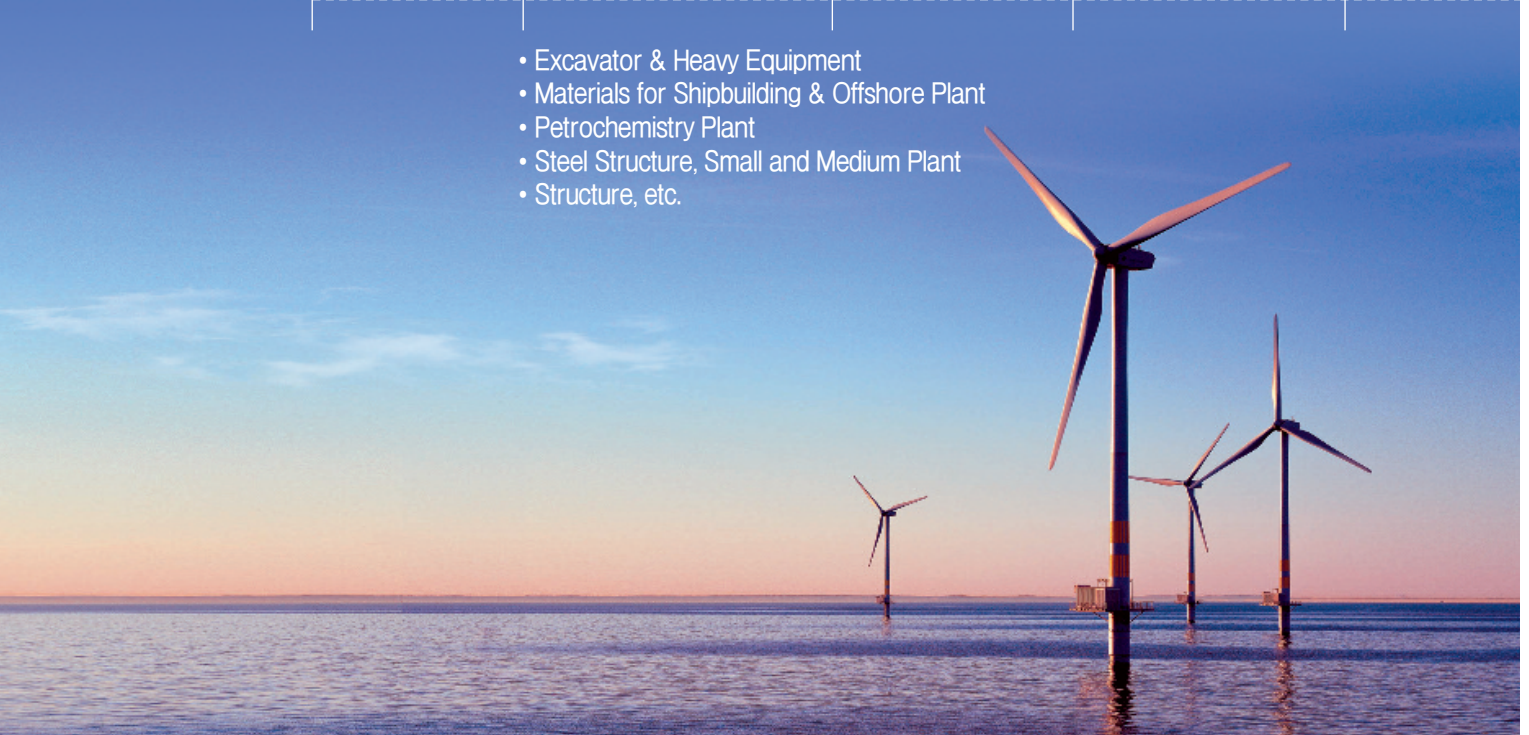
조선 기자재 및 해양 플랜트

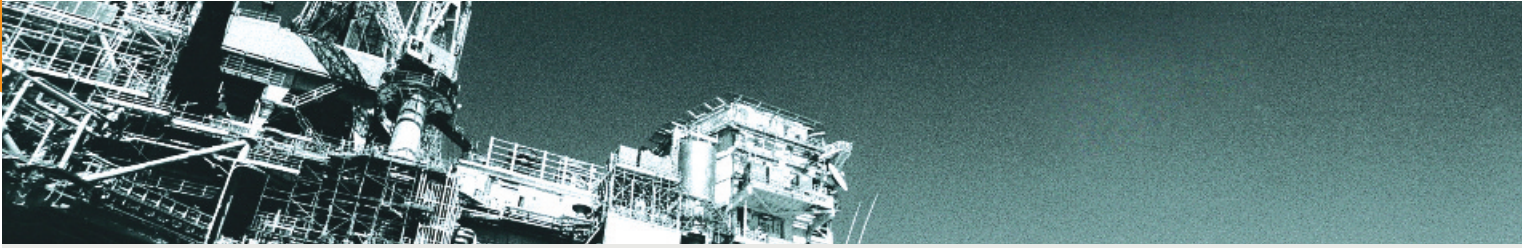
석유화학장치 플랜트

강구조물, 중소형 플랜트

기타 구조물

- Excavator & Heavy Equipment
- Materials for Shipbuilding & Offshore Plant
- Petrochemistry Plant
- Steel Structure, Small and Medium Plant
- Structure, etc.





광양2공장 | Gwangyang No.2 Factory

삼현철강(주) 광양2공장은 대규모의 공장부지와 생산설비로 여러 산업분야에 필요한 철강재를 가공하고 있습니다. 정교한 절단이 가능한 최신 LASER, GAS절단기와 PLASMA 및 전처리작업으로 최상의 제품을 생산하고 있으며, 건설중장비의 주요 제관부품, 조선해양, POSCO의 절단제작, 도장 공정 등 다양한 제품을 공급하고 있습니다.

At Gwangyang No.2 Factory of Samhyun Steel Co., Ltd. with a large-scale factory plot of land and facilities, steel materials are being processed which are needed in various industrial fields. Best-quality products are being produced here, employing Laser, Gas cutters, Plasma and preprocesses, which can make an elaborate cutting, while various products, such as major parts for construction equipment, pipes for shipbuilding and POSCO's cutting processes, are being supplied.

- 건설중장비 제작용 / Manufacturing for Heavy Equipments
- 조선기자재 및 해양 플랜트 / Materials for Shipbuilding & Offshore Plant
- 산업설비 및 강구조물 / Industrial Facilities & Steel Frames



① 광양2공장 내부 전경 / Inside View Gwangyang No.2 Factory

■ 보유 설비현황 / Major Facilities

1. GAS Cutting M/C	KOIKE	(6unit)	7. Press Leveling M/C	BUKSUNG	(3unit)
2. Plasma Cutting M/C	KOMATUS	(9unit)	8. Plate Beveling M/C	ILDEUNG	(2unit)
3. Laser Cutting M/C	KOIKE	(1unit)	9. Radial M/C	DOOSAN	(3unit)
4. Machining Center	SEYANG 외	(4unit)	10. Welding M/C	LOGITECH	(3unit)
5. CNC Milling M/C	KIHUNG	(4unit)	11. OHC / G. Crane	DONGSUNG	(49unit)
6. Press Brake	HANYUNG	(4unit)	12. Fork Lift	CLARK	(7unit)

■ 제작능력 / Production capacity : 45,000 ton/year (3,750ton/month)

■ 절단가공능력 / Cutting process capacity : 96,000 ton/year (8,000ton/month)



CNC 플라즈마 절단기(1토치) / CNC Plasma Cutting Machine (One Torch)



CNC 플라즈마 절단기(2토치) / CNC Plasma Cutting Machine (Two Torch)



② 광양2공장 내부 전경 / Inside View Gwangyang No.2 Factory



CNC 플라즈마 절단기(고마쯔)
CNC Plasma Cutting Machine (KOMATSU)



CNC GAS절단기 / CNC Gas Cutting Machine



CNC 레이저 절단기 / CNC Laser Machine



중장비부품 가공제작과 육해상 플랜트 및 산업전반에 걸쳐 전문화된 제품생산에 박차를 가하고 있으며, 숙련된 기술력노하우와 품질관리로 고객 요구조건에 맞는 시스템을 구축하고 있습니다.

The processing of heavy equipment parts and the production of the land and sea plants and other specialized products across the board are being pushed ahead, while a system has been established which fits the requirements of the customers through skilled technical knowhow and quality control.



제관 용접공정 / Welding Flow



2 SPINDLE가공기(드릴+탭) / 2 Spindle Machine



FMC드릴 / FMC Drill Machine



NC밀링기 / NC Milling Machine



프레스 밴딩기 / Press Bending Machine



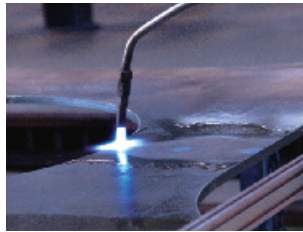
드릴 탭 / Drill Tap Machine



레이얼 드릴링 / Radial Drilling Machine



화염절단기(수동)
YK-300 Flame Cutting Machine



화염교정 / Blaze-Flatness



롤러교정기 / Roller-Flatness M/C



롤러밴딩/Roller Bending



가공후 출하 완제품 / End products



직선 면취기 / Beveling Machines



도장공정 / Painting Flow

생산공정 / Products Flow





POSCO HR-PALTE 임가공 지정업체

광양1공장/코일가공센터 | Gwangyang No.1 Factory/Coil Center

고장력강, 고탄소강, 일반강 Coil 임가공 전문업체로서 철판을 평탄도로 품질을 평가하는 시대는 지났습니다. 삼현철강(주) 코일가공센터는 철판의 잔류응력 제거로 2차 가공시 형상변화가 없는 최상의 제품을 공급하고 있으며, 광양지역의 핵심코일센터로 자리매김 하고 있습니다.

Time has gone when the quality of the steel sheets is evaluated through their flatness, as a specialized toll processor of high strength steel, high-carbon steel and common steel coils. The Coil Processing Center of Samhyun Steel Co., Ltd. supplies best-quality products which do not change in shapes, when in secondary processes, through the removal of the residual stress of the steel sheets, and so is being positioned as a core coil center in Gwangyang region.



후물 LINE / 12.7T Shear Line

가공능력 / Capacity

▶ 후물 LINE

생산능력	300,000ton/year
I.D	508~760mm
O.D	800~2,200mm
두께	3.2~22mm
폭	800~1,950mm
길이	900~14,700mm

▶ 박물 LINE

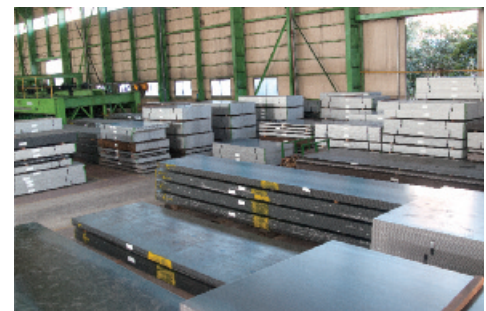
생산능력	300,000ton/year
I.D	508~820mm
O.D	800~2,200mm
두께	1.4~7.0mm
폭	800~1,670mm
길이	800~6,700mm



박물 LINE / 6.5T Shear Line



코일가공기 / Coil Machine



생산 완제품 / End products

기계현황 / Machine Facilities

▶ 후물 LINE

- 분당 33Cut 최대속도 70m/Min
- 2-LOOPER SYSTEM
- Finish Leveler
- 마그네틱 Piler
- 제품 최대길이 14.7m까지 파일링
- 컴퓨터 자동제어장치로 잔류응력 제거

▶ 박물 LINE

- 분당 최대속도 80m/Min
- 절단방식 : 로터리 스윙 사 방식
- TOW Piler 체제 : 정지없이 변환적재 가능
- 스크랩 와인더 방식
- 제품 최대길이 6.7m까지 파일링



제품 출하 / Shipment of the products

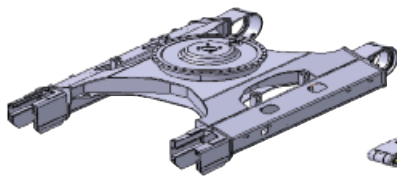


주요생산품/Main Products

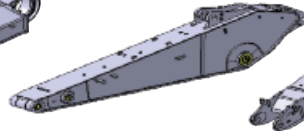
건설장비/Construction Equipment



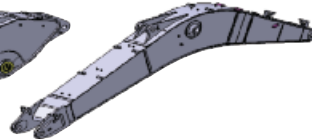
- EC 140, EC 210, EC 240
- BOTTOM PLATE, B/OUT : 40,000ton/년 (3,300ton/월)



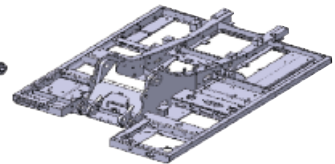
EC 210, 240 LOWER FRAME



EC 210, 240 ARM

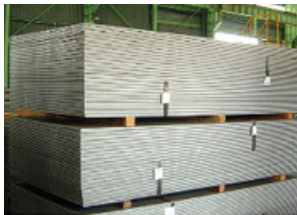


EC 210, 240 BOOM

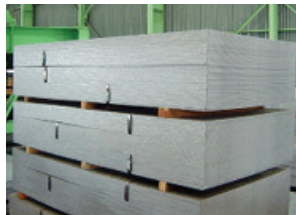


EC 210, 240 UPPER FRAME

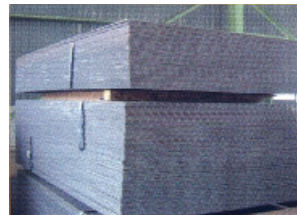
열연코일재/hot rolled coil



열연후판



열연박판

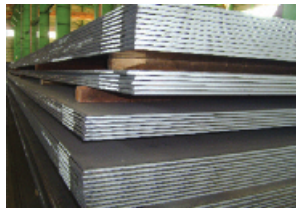
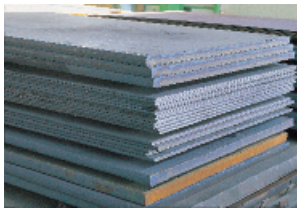


무늬강판

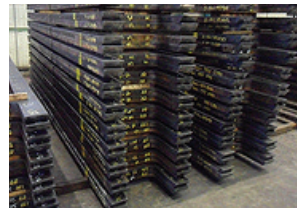


열연코일

후판/HR Plate



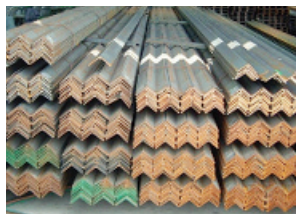
제조품/Products



형강류/Shape steel



칼라C형강



ㄱ형강



I-빔, H-빔



사각파이프

■ 취급품목/Products Item

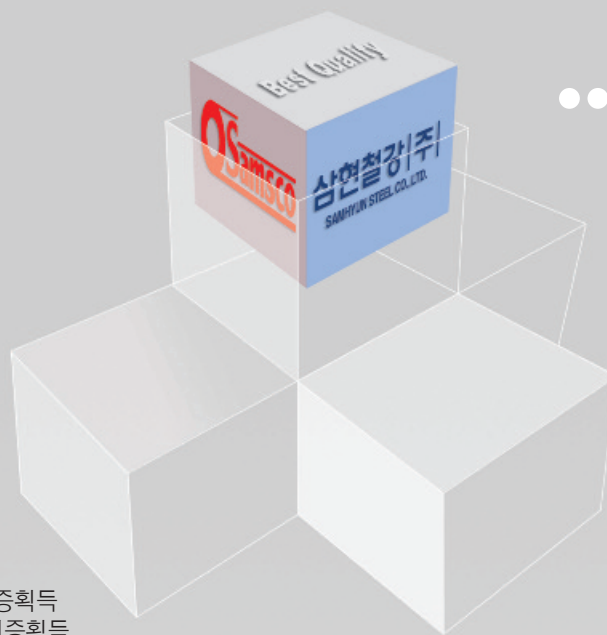
H-빔 / I-빔 / ㄱ형강 / C형강 / 철근 / 평철
사각강 / 레일 / 원형강 / 전선관 / 사각파이프 / EX-메탈
배관용 탄소 / 강관 / 압력배관용 / 탄소강관
일반구조용 탄소강관 / 강관말뚝 / 강널말뚝 / 형강류 일체



원형파이프



C형강



인증서/The Status of Certificate

- ISO 9001:2008, KS Q ISO 9001:2009 품질경영시스템 인증획득
- ISO 14001:2001, KS I ISO 14001:2009 환경경영시스템 인증획득
- GL(Germanischer Lloyd) 선급 공장 인증획득
- OHSAS 18001:2007 안전보건경영시스템 인증획득
- ISO 9001:2008, KS Q ISO 9001:2009 Quality Management System Certificate acquired
- ISO 14001:2001, KS I ISO 14001:2009 Environment Management System Certificate acquired
- GL(Germanischer Lloyd) Classification Factory Certificate acquired
- OHSAS 18001:2007 Safety and Health Management System Certificate acquired



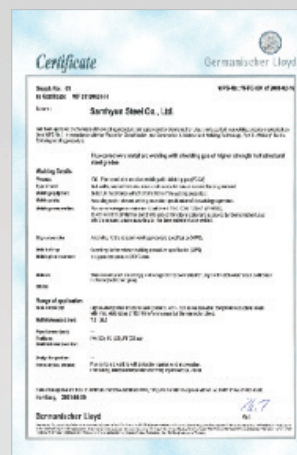
ISO 9001



ISO 14001



OHSAS 18001



GL선급공장인증





삼현철강주식회사 SAMHYUN STEEL CO., LTD.

창원사무소/본사

경상남도 창원시 성산구 중앙대로 60
Tel: 055) 252-6060 / Fax: 055) 252-7108

광양1공장

전라남도 광양시 백운1로 54
Tel: 061) 792-7171 / Fax: 061) 792-9880

광양2공장

전라남도 광양시 태인동 1612-9 번지
Tel: 061) 795-9875 / Fax: 061) 795-9876

함안공장

경상남도 함안군 산인면 신산로 45
Tel: 055) 582-7222 / Fax: 055) 582-7224

서울사무소

서울특별시 서초구 반포대로 14길 71 (서초동)
(서초 LG에클라트 1704호)
Tel: 02) 588-8070 / Fax: 02) 588-8068

Changwon Sangnam Office / Head Office

60, Jungang-daero, Seongsan-gu, Changwon-si,
Gyeongnam, Korea
Tel: +82-55-252-6060 / Fax: +82-55-252-7108

Gwangyang No.1 Factory

54, Baegun 1-ro, Gwangyang-si, Jeollanam-do, Korea
Tel: +82-61-792-7171 / Fax: +82-61-792-9880

Gwangyang No. 2 Factory

1612-9, Taein-dong, Gwangyang-si, Jeollanam-do, Korea
Tel: +82-61-795-9875 / Fax: +82-61-795-9876

Haman Factory

45, Sinsan-ro, Sanin-myeon, Haman-gun, Gyeongnam, Korea
Tel: +82-55-582-7222 / Fax: +82-55-582-7224

Seoul Office

Rm1704, LG Seocho Eclat,
71, Banpo-daero 14-gil, Seocho-gu, Seoul, Korea
Tel: +82-2-588-8070 / Fax: +82-2-588-8068